

# THE WINSOR AUTOPSIES

## Can an Unhealthy Spine Affect Internal Organs?

At the University of Pennsylvania, Dr. Henry Winsor conducted an experiment based on chiropractors claim that by adjusting the vertebrae they can relieve stomach troubles, ulcers, menstrual cramps, thyroid conditions, kidney disease, constipation, heart disease, lung and other diseases. In this experiment he dissected both human and animal cadavers to see if there was any relationship between any diseased internal organs discovered on autopsy and the vertebrae and nerves that went to the organs. Dr. Winsor dissected 75 human and 72 cat cadavers. He found nearly 100% correlation between minor curvatures of the vertebrae and diseases of the internal organs.

### Results

#### Heart Disease

All 20 cases with heart and pericardium conditions had the upper five thoracic vertebrae misaligned (T1-T5)

#### Lung Disease

All 26 cases of lung disease has spinal misalignments in the upper thoracic area

#### Stomach Disease

All 9 cases of stomach disease had spinal misalignment in the mid-thoracic (T5-T9) area.

#### Liver Disease

All 13 cases of liver disease had misalignments in the mid-thoracic area (T5-T9)

#### Gallbladder

All 5 cases with gallstone disease had spinal misalignments in the mid-thoracic area (T5-T9)

#### Pancreas

All 3 cases with pancreas disease had spinal misalignments in the mid-thoracic area (T5-T9)

#### Spleen

All 11 cases with spleen disease had spinal misalignments in the mid-thoracic area (T5-T9)

#### Kidney

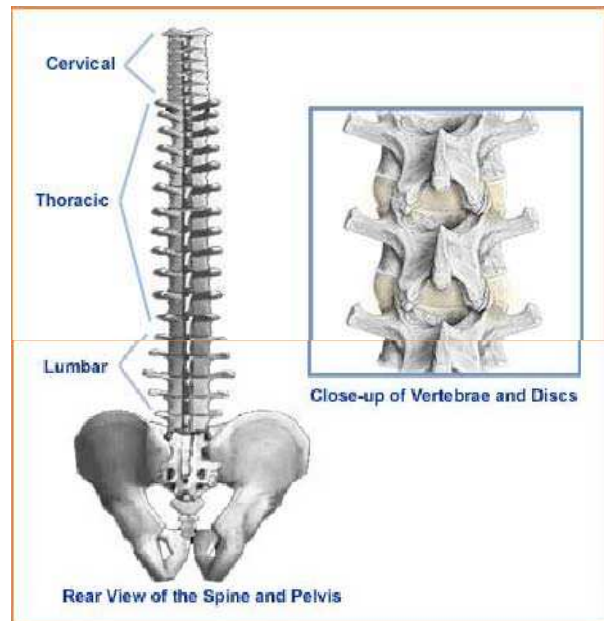
All 17 cases with kidney disease were out of alignment in the lower thoracic area (T10-T12).

#### Prostate and Bladder Disease

All 8 cases with prostate disease had the lumbar vertebrae misaligned

#### Uterus

2 cases with uterine conditions had the second lumbar misaligned



Information from: Winsor, 11. Sympathetic segmental disturbances-11. The evidence association, in dissected cadavers, of visceral disease with vertebrae deformities of the same sympathetic segments. Medical times. Nov 1921, 49 pp 267-271